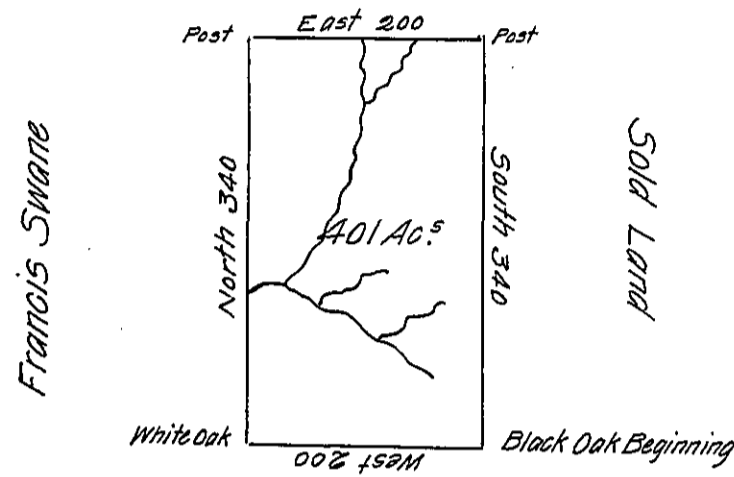


Donation Line



Wm Nichols Jr

The above is a Draught of a Survey made the 30<sup>th</sup> of January 1795. in pursuance of a Warrant Granted to Francis Nichols for 400 Acres of Land Dated the 4<sup>th</sup> of January 1794 Situate North and West of the River Ohio on the Waters of Slippery Rock Creek Adjoining Land Granted to Francis Swane. Called Bristol Containing four Hundred <sup>one</sup> red Acres and the Usual Allowance of Six p<sup>t</sup> Cent for Roads.

Jonathan Leet, D.S.

To Daniel Brodhead Esq.  
Surveyor General

IN TESTIMONY that the above is a copy of the original remaining on file in the Department of Internal Affairs of Pennsylvania, made conformably to an Act of Assembly approved the 16th day of February, 1833, I have hereunto set my Hand and caused the Seal of said Department to be affixed at Harrisburg, this first day of March 1906.

*Samuel P. Brown*  
Secretary of Internal Affairs.